

Where
Galleria,
Canavee 0

Collaborative Structure

About

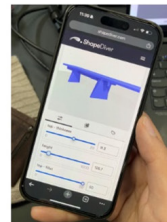
Participative Fabrication with Recycled Timber Through Digitally Augmented Processes.

We invite participants to explore the interaction of manual craft and digitally augmented fabrication processes. In the workshop Collaborative Structure we will use the power of computational design to collaboratively develop and fabricate a parametrically controlled furniture design. This furniture is imagined as a functional bench consisting of a multitude of different elements connected through the same logic of timber-only connections. For this purpose, every participant will focus on the design and production of a single element extending the bench and connecting to its neighbors. As such, the final artefact will be the result of both individual and collaborative decisions that are directly executed through a participative fabrication process.

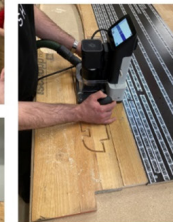


ZHAW

1. Configure your Design



3. Manufacture using Shaper CNC



Safe and precise



4. A perfect connection

5. Slot together, no glue!



6. Your own piece - after just 2.5h!



2. Measure your Material



No experience required



Schedule

10:30 – 11:15 | Welcome and Introduction,
Workshop topic, goals, and setup

11:15 – 13:00 | 1st fabrication slot, 4 persons

13:00 – 14:45 | 2nd fabrication slot, 4 persons

14:45 – 16:30 | 3rd fabrication slot, 4 persons

16:30 – 17:30 | Wrap-up, finalization, installation
Presentation of the results.

Team



Yves Ebnöther

School of Architecture, Design and Civil Engineering, ZHAW



Konrad Graser

School of Architecture, Design and Civil Engineering, ZHAW



Edurne Morales

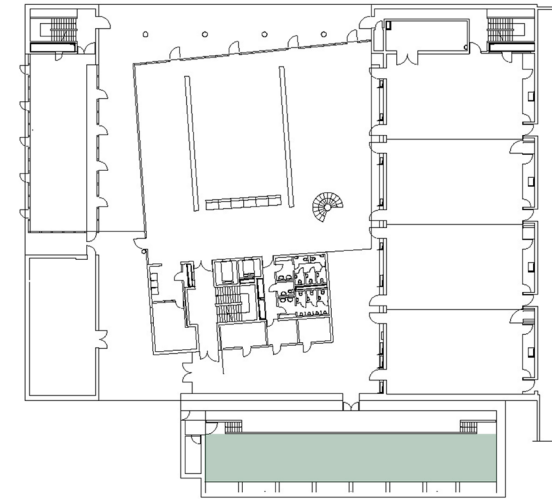
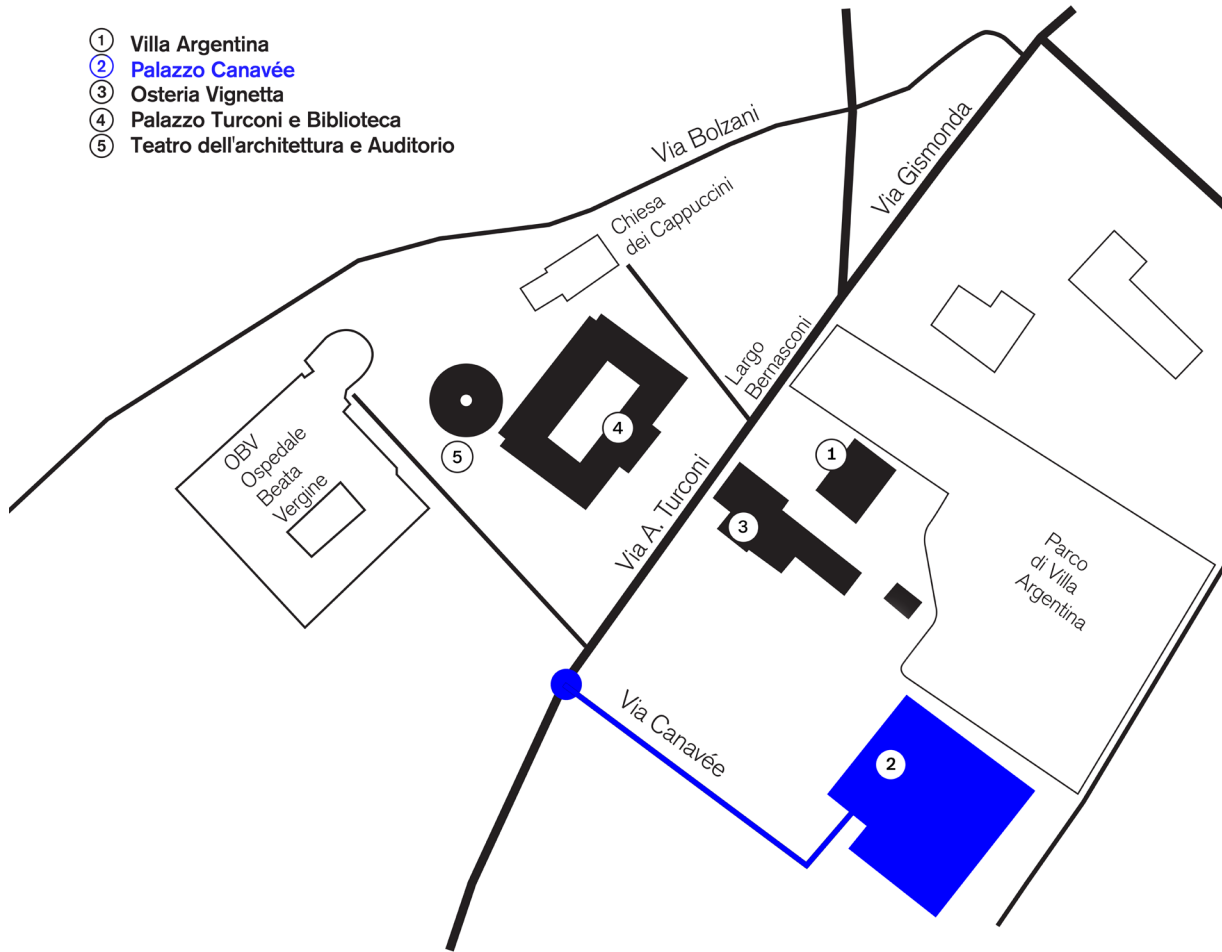
School of Architecture, Design and Civil Engineering, ZHAW



David Jenny

School of Architecture, Design and Civil Engineering, ZHAW

- ① Villa Argentina
- ② Palazzo Canavée
- ③ Osteria Vignetta
- ④ Palazzo Turconi e Biblioteca
- ⑤ Teatro dell'architettura e Auditorio



Canavée 0



Galleria: W5: Augmented Carpentry
W8: Collaborative Structure